

Printing Simulator – Newspaper Multi-Web

Multi-Web

Offset

The Multi-Web simulator models a 4-color 48-page press from the pasters through the superstructure and folders to the conveyors. Ink and water interactions are simulated along with console and on-press adjustments. The interactive trainer works like an airplane simulator and is so effective that its users feel that they are “virtually printing” – the only difference is that there are no paper, ink or press costs. Production problems of varying complexity can be created to suit all staff levels. The real results are accelerated training, improved operator skills and higher productivity.

Software runs on standard multi-media PCs preferably equipped with two monitors. One monitor displays the press, its control console and its mechanical parts; the second shows the printed copy and proof.



Press control monitor

Control the entire press line from loading paper rolls to folded sections on the conveyor.

It allows all functional settings to be made and adjusted. Intuitive icons on the press console display the printed page or the folded newspaper. The operator can check the press and the status of its variable settings. An interactive diagnostic self-help identifies possible problems along with explanations and solutions.

Finished product monitor

Let the operator compare differences between the “printed and folded form” and the “proof” copy. A 3D representation allows a complete check of folds, web position and cutting registration. A magnifier allows close-up sheet inspection and verification of registration. The print copy has a grey bar which can be checked with both the magnifier and densitometer to access grey balance, dot gain and density.

Virtual printing... Real results : what users say

“The simulator gives our pressmen the ability to do everything from making assessments on a proof to checking ink density. By the time the new press was installed, they were already used to it.”

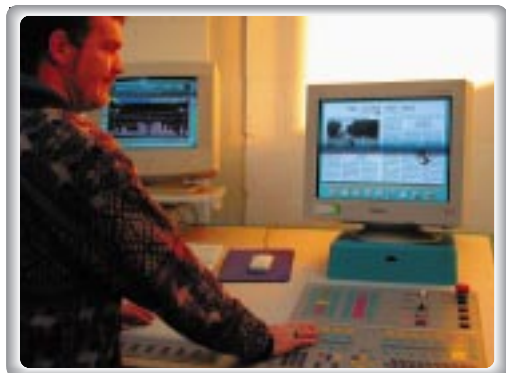
MILWAUKEE SENTINEL JOURNAL

“Trainees can learn or sharpen their skills on all of the major issues, from press registration to ink and water balance. Using simulation is fast and very comprehensive. It gives our printer a lot of confidence.”

RR DONNELLEY & SONS

Simulator Advantages

- Reduce waste, make ready time (~4%)
- Increase average running speed
- Develop efficient problem solving skills
- Build confidence, helps team building and understanding
- Reduce training time by 50%, and maintain printing skills
- Structure skill enhancement and evaluation
- Improve best practice & knowledge transfer
- No paper, ink or press costs when training



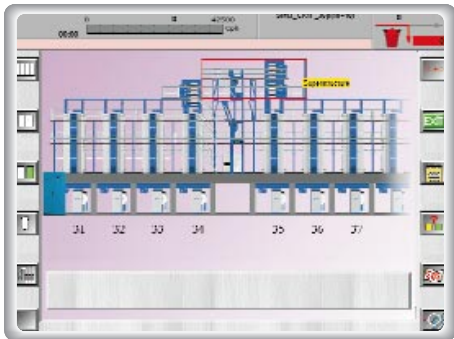
The most realistic “hand on” operating experience comes from integrating the simulator software into a press console.



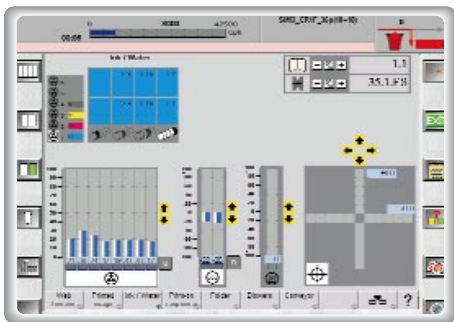
www.sinapsegraphic.com

Simulation & Software
for the Graphic Arts

Press



Press Console



Web Tension :

Former Feed Roller
Former Prefeed Roller
Per Web
Infeed Unit
Dancer Roller
Draw Roller
Ribbon cut-off and position
Per web
Cut-off margin all
Turner Bar
Reel Sidelay

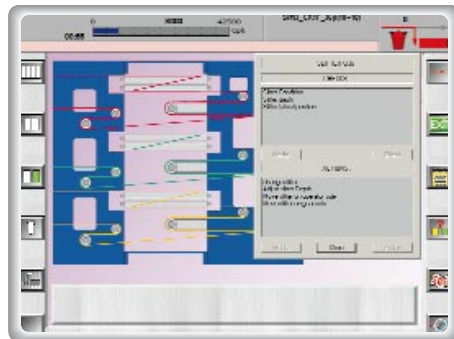
Ink/Water :

Per tower and per color
Spray
Ink Segment
Registration

Folder :

Lead In Rollers Former A
Lead In Rollers Former B
Drum Folder
Guide Driven Lead
Pins adjustment
Pinch Roller Lead

Press Adjustments



Dampening Station

Water
Reelstand
Current reel
Paper
Reel core
Dancer Roller
Infeed-roller
Infeed squeeze roll
Printing unit
Inking system
Ink film roller
Inking system rollers
Ink fountain
Ink metering screws
Ink

Plate cylinder

Plate

Blanket cylinder

Blanket

Dampening system

Dampening Spray bar
Pipes
Dampening rollers

Superstructure

Draw roller full web
driven rollers

Draw roller full web

nip rolls
Slitters
Angle Bar
Folder
Upper Folder
Former Prefeed Roller
Former Feed Roller
Former Feed Roller Trolley
Former
Lead in rollers
Guide Roller
Cutting cylinder
Knife
Folding and collecting cylinder
Cutting anvil
Folding Knife
Pins
Pinch Rollers
Spider Wheel
Conveyor

Potential Faults



All ribbon cut off
register error
Bad delivery
Bad distance between newspapers
Bad overlap
Bad ribbon width
Circumferential slurring
Creasing after impression
Creasing before impression
Cross Fold crooked
Cross Fold shifted
Delivery Jam
Dirt marks
Dog-ear
Dry - Scumming
Enlargement (dot spread)
Fogging
Folder jam
Greasing
Hickeys
Increased Thickness of ink film
Inking
Lateral slurring

Left-right register
Low
Miss-insertion
Off-centred impression
Offset ribbon lateral error
Plate-roller marks
Registration
Ribbon cut off register error
Section lateral moving
Spotting
Tear at foot (head) of signature
Tear at former nose
Tear at pinch roller
Tear at slit edge
Web break
Web cut off register error

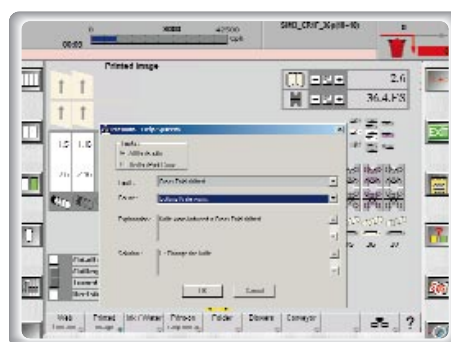
Print Display and Analyses



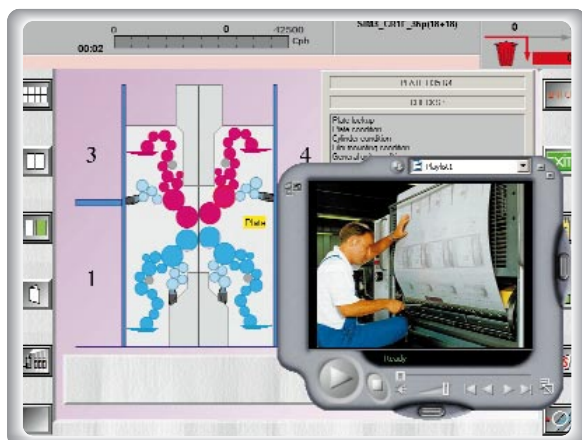
Display

3D folded product
Page per page
Front 8 pages
Back 8 pages
Single page against proof
User help system
Tools
Magnifier
Densitometer
Display of folds in 3D
Production info
Good & bad copies
Cost & time

Diagnostic Help System



Interactive diagnostics
Possible causes for current problems
Explanations
Solutions



Personalization Possibilities

Multi-media links (photos, videos, text)
Individual production costs
Creation of training courses
Custom "print copy form"
Integration into operator console



Sinapse Graphic International
Bâtiment Epicure - Les Algorithmes
Route de l'Orme aux Merisiers
91194 Saint-Aubin Cedex - France

info@sinapsegraphic.com
Tel. 33 (0)1 69 35 54 00

www.sinapsegraphic.com
Fax 33 (0)1 69 35 07 15