

Printing Simulator - SHOTS

Sheetfed

Offset

The sheetfed simulator models a 6-color press from infeed to coating and delivery along with its plates, blankets, ink and paper. The interactive software works like an airplane simulator and is so effective that its users feel that they are "virtually printing" — the only difference is that there are no paper, ink or press costs. Production problems of varying complexity can be created to suit all staff levels. The real results are improved operator skills and higher productivity.

Software runs on standard multi-media PCs preferably equipped with two monitors. One monitor displays the press, its control console and its mechanical parts; the second shows the printed copy and proof.



Press console monitor

Control the entire press line from feeder to delivery. It allows all functional settings to be made and adjusted. Icons on the press console display the printed page, its proof, and access tools. The operator can check the press and the status of its variable settings. An interactive diagnostic self-help identifies possible problems along with explanations and solutions.

Print copy monitor

Compare differences between the "printed form" and the "proof" copy. A magnifier allows close-up sheet inspection and verification of registration. The print copy has a color control strip which can be checked with both the magnifier and densitometer to assess gray balance, dot gain, slurring, density, trapping, plate exposure and other printing details.

Virtual printing... real results : what users say

"We have seen a direct parallel between trainee success using the program and performance on the printing press. Sinapse Graphic simulation is a great tool."

SMURFIT-STONE

"One of the best, most efficient and cost effective means of building a continuous training culture. Press crews become more systematic and effective in their trouble shooting skills."

INTERNATIONAL PAPER

Simulators help

- Develop efficient problem solving skills
- Reduce waste, make ready and running time
- Investment to increase staff productivity and continuity
- Build confidence, helps team building and understanding
- Reduce training time and maintain printing skills
- Structured skill enhancement and evaluation
- Best practice & knowledge transfer



The most realistic "hand-on" operating experience comes from installing the simulator software into a press console.

SINAPSE
GRAPHIC

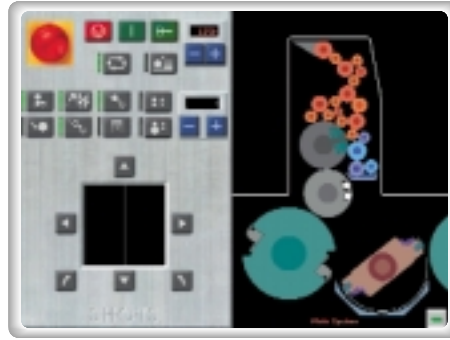
www.sinapsegraphic.com

Simulation & Software
for the Graphic Arts

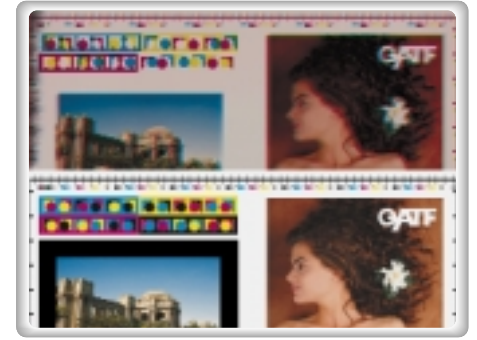
Press



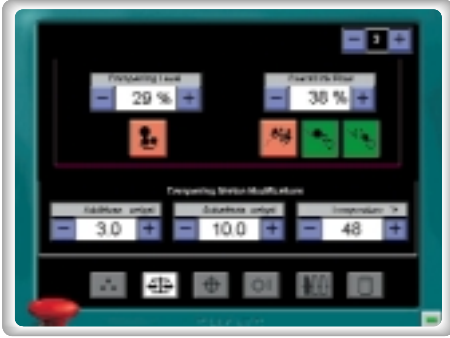
Press Adjustments



Potential Faults



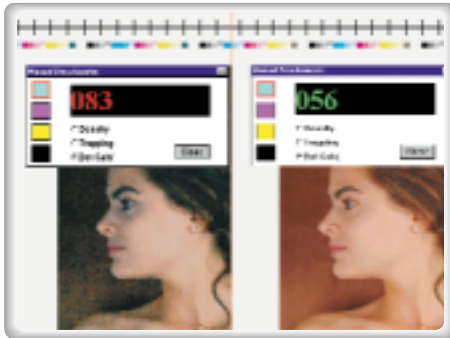
Press Console



Ink keys	Production info
Overall ink/water	Diagnostic info
Alcohol / substitutes	Cylinder pressures
Additives	Temperature
Register (fit)	Speed
Units & rollers on/off	Perfecting
Format	

Pressroom	Plates	Back-up registration	Moire
Humidity/Temperature	Plate cylinder	Bad delivery	Mottling
Feeder	Plate packing system	Blinding	Pebbling
Decurling device	Inking system	Build-up (ink piling)	Picking
Input pile & paper parameters	Fountain	Color difference	Plate running dry
Separating lamella	Fountain (ductor) roller	Crash	Print length
Insertion roller jogger	Ink segments	Crooked sheet	Registration
Pile guides	Oscillators	Dents in blanket	Repeating image
Compressor	Form rollers	Dog ears and tears	Scumming/ catching-up
Feeder head	Dampening system	Double sheet	Set-off
Suckers	Fountain rollers	Doubling	Slur : circumferential/ lateral
Stops	Metering rollers	Drying delay	Smearing
Side lay	Form rollers	E-stop (breakdown)	Stains in print
Double sheet detector	Coating	Filling-in	Streaks on blanket
Feeder Board	Coating cylinder	Fit (register)	Strike-through
Print unit	Dryer	Flooding	Tinting
Grippers	Powder	Fluffing	Tone value
Impression cylinder	Powder device	Ghosting	Tracking
Blanket	Delivery	Hickeys	Trapping
Blanket cylinder	Grippers	Ink deposits	Wrinkling
Blanket packing	Blowers	Lines in print	
	Suction	Loss of image	
	Stack Position	Missing sheet	

Print Display and Analyses

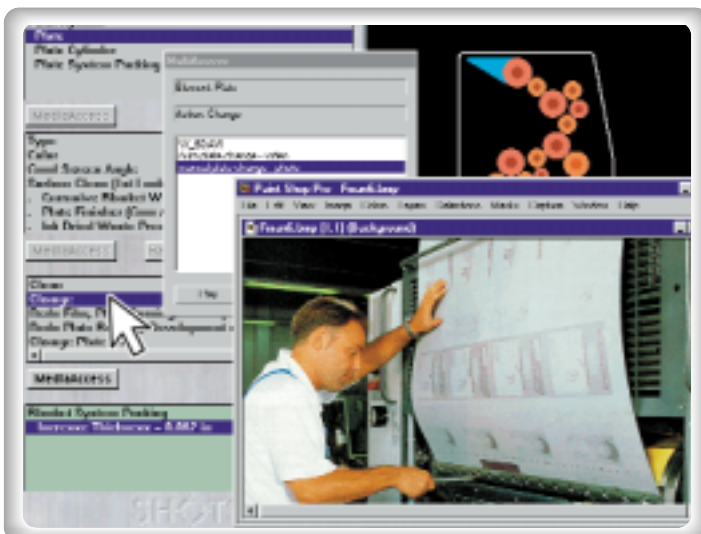


Display
Full or partial pages
Current print vs. proof
Front or back
Tools
Magnifier
Densitometer
Glossmeter
Production info
Paper type
Ink type
Good & bad copies
Cost & Time

Diagnostic Help System



Interactive diagnostics
Possible causes for current problems
Explanations
Solutions



Personalization Opportunities

Multi-media
Industrial production costs
Creation of training courses
Customized print images



Sinapse Graphic International
Bâtiment Epicure - Les Algorithmes
Route de l'Orme aux Merisiers
91194 Saint-Aubin Cedex - France

info@sinapsegraphic.com www.sinapsegraphic.com
Tel. 33 (0)1 69 35 54 00 Fax 33 (0)1 69 35 07 15