

What's New - SHOTS V4.7

Release Date: October, 2009

Version numbers and availability for operating systems

Product	Version	Win2000	WinXP	Vista*
SHOTS	4.7	X	X	X
SHOTS Connected	4.7_C	X	X	X

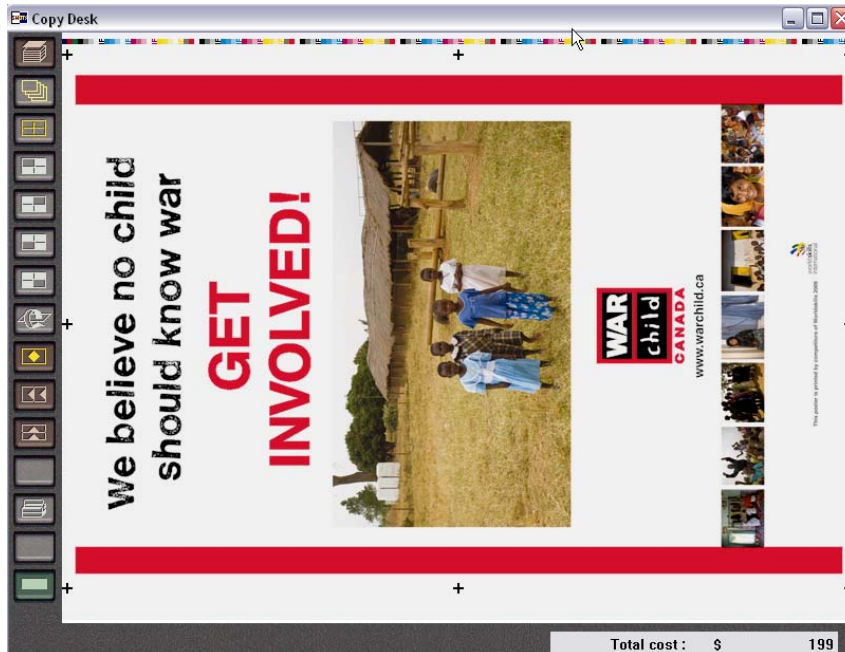
* VISTA SP2 required

New features

Table of Contents :

Version numbers and availability for operating systems	1
New features	1
WorldSkills Calgary 2009	2
Dynamic change of interface language.....	3
Speech synthesis as option for all available languages	3
Improvement of Ink profile management	4
Separate Display for each Plate.....	4
New tool for trainer: ASA module.....	5
New tool for trainer: the USER report	6
Two new print jobs available	7
New information in trace report.....	8
"Seeing" the trainee's print copies	8
Tracking the ink profile changes	8
Color control and production information.....	8
Some anomalies resolved in version 4.7	8

WorldSkills Calgary 2009



SHOTS was used during the latest World Skills competition in Calgary.

The exercises from the WorldSkills competition are available in version 4.7. You can practice under the same conditions...

Some contestants solved the "hardest problem in 45 minutes" some in 90 minutes and about 20% did not solve it.

Sinapse Print Simulators was an official sponsor of WorldSkills Calgary. 5 SHOTS Sheetfed simulators were used in the evaluations alongside 2 Heidelberg presses.



Dynamic change of interface language



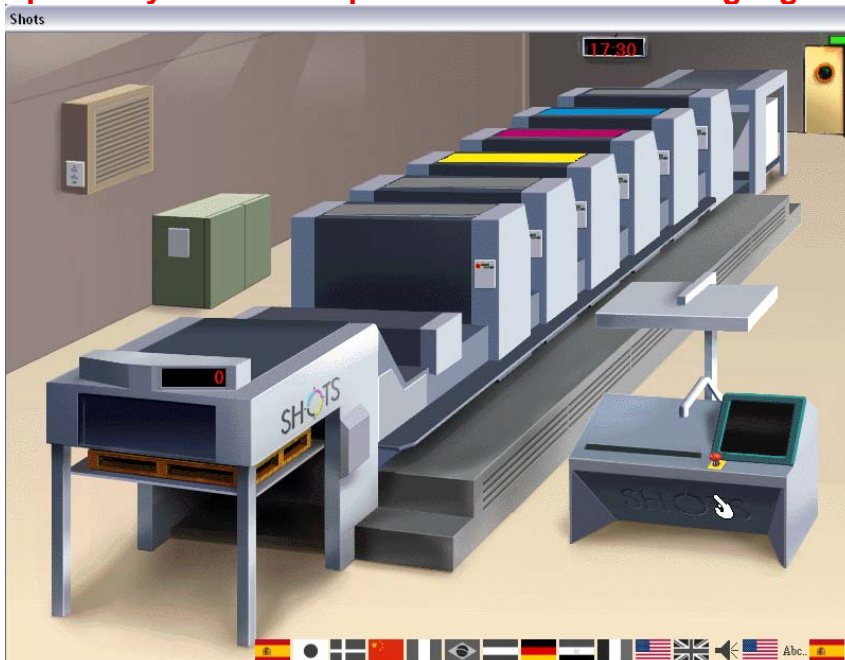
It's now possible to change the language of the interface without quitting the simulator.

You can choose among 12 different languages.

Japanese interface is now available.

Note: For Japanese, Chinese and other "double-byte" languages you need to change the settings of Windows and restart the computer.

Speech synthesis as option for all available languages

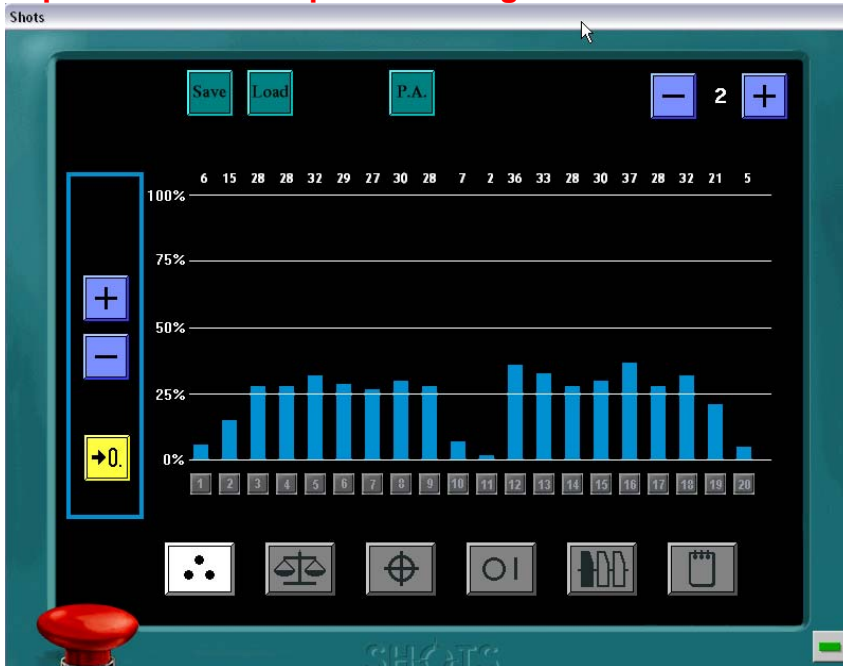


With the speech synthesis option, it's now possible to display menus and actions in one language (e.g Spanish) and listen to them spoken out loud in the same language or in another language (e.g; English)

Note: the end-user must separately purchase voices other than "American". (licensing issues). Sinapse can indicate the appropriate suppliers

In this configuration, Spanish, Chinese, German and English voices are shown as available (colored flags)

Improvement of Ink profile management



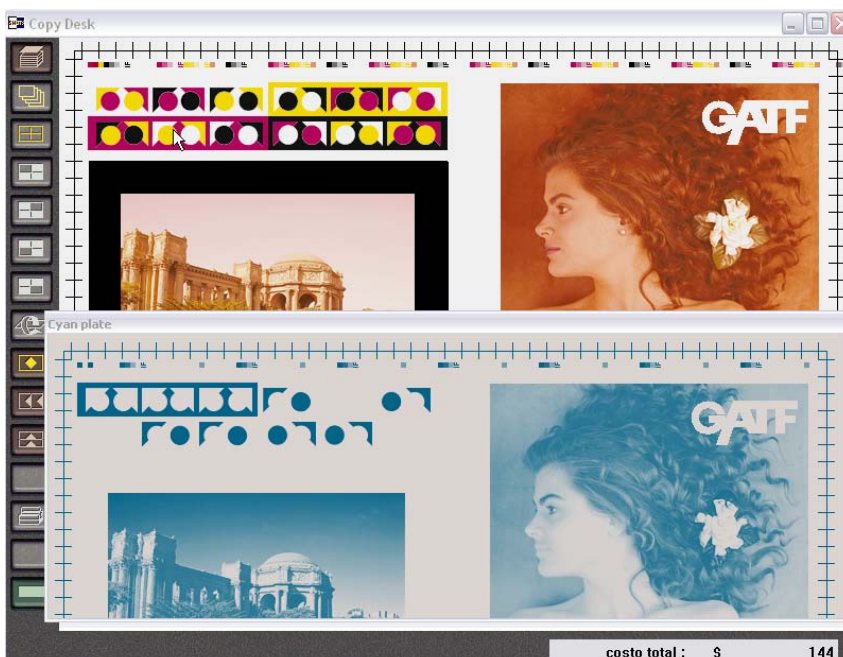
From the ink screw console, you can save and load your ink profile during a training session or reload the result from the plate analyzer.

If you click on the “zero” button, the profile will be reset to zero.

The P.A. button loads the profile for each color. The trainer can deactivate this function to force the trainee to set the ink profile manually.

In the Trainer module, the instructor can set one or all of the profiles to zero when creating problems to solve.

Separate Display for each Plate



You can display the plate for each color and ask the user to set the ink profile manually (without pre-press settings)

NOTE: for those users who have 3-screen configurations, the plate display can be moved (like any window) and put on the third monitor

New tool for trainer: ASA module

The screenshot displays the ASA (Automatic Session Analysis) module interface. The window title is 'S:\Shots\STUDENTS\thierry.STD\SHOTS Tutorial 3_1.xml'. The interface is divided into several sections:

- File:** Contains dropdown menus for Directories (S:\Shots), Students list (thierry.STD), Exercises list (SHOTS Tutorial 3), and Reference list (trainer.std). There is also a checkbox for 'Show the reference file'.
- Date:** mercredi 30 septembre 2005
- Status Indicators:**
 - Quittus: Green circle
 - Status: Green circle
 - Waste copies: (+9 %): Green circle
 - Total time: (+0 %): Green circle
 - Total cost: (+12 %): Yellow circle
- Search / Action filters / Exo filters:**
 - Reporting:**
 - Summary
 - Initial context
 - Situation 1
 - User faults:
 - Final result
 - Final result
 - Comparison:** (Empty)

The main content area shows a comparison report for 'Situation 1: The exercise is finished (Student - Ref)'. The report is structured as follows:

Situation 1:

User faults:

- FITTING ERROR
- COLOR DIFFERENCE
- FITTING ERROR
- COLOR DIFFERENCE
- COLOR DIFFERENCE
- COLOR DIFFERENCE

Result of Situation 1: The exercise is finished (Student - Ref)

Copies:

- Number of copies saved (delivery): 0 - 0 (0%)
- Number of copies scrapped (waste): 70 - 64 (+9 %)
- Total copies: 70

Time:

- Run time: 00:01 - 00:01 (+0 %)
- Virtual time: 00:01 - 00:01 (+0 %)

Costs:

- Hourly Cost :: \$1000 - \$1000 (+0 %)
- Material cost for 1000 copies: \$300 - \$300 (+0 %)
- Running time cost: \$25 - \$22 (-12 %)
- Checks and actions cost: \$0 - \$0 (0%)
- Material Machine cost: \$21 - \$19 (-10 %)
- TOTAL COST: \$46 - \$41 (+12 %)

Buttons for 'SaveRTF' and 'PrintRTF' are visible next to the cost data.

ASA (Automatic Session Analysis) is a new module for the trainer. At the end of a session, a new report is generated.

With ASA, you can quickly compare a trace from any user with a trace of the same exercise from a "reference" (the trainer) or with another user.

New tool for trainer: the USER report

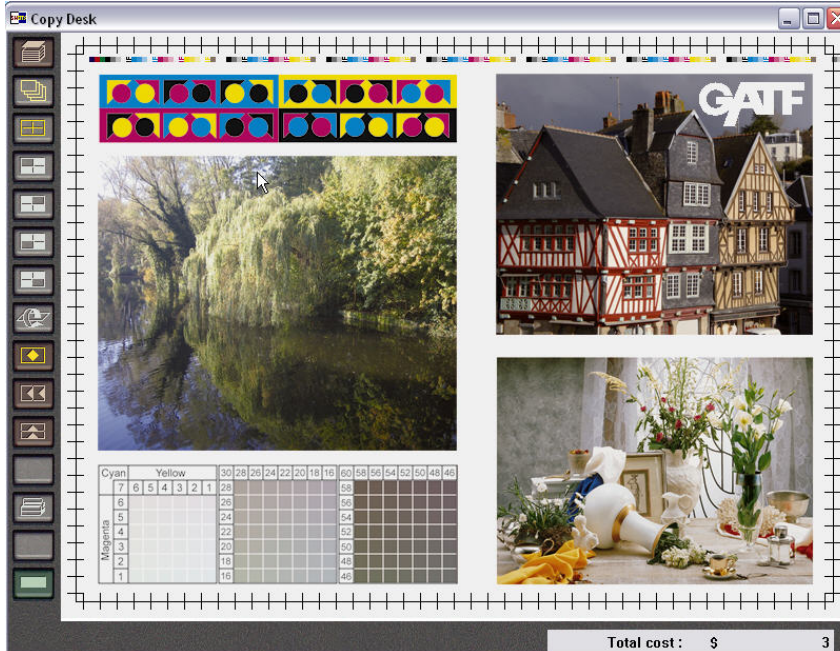
With the USER report shown below, you can display general results (waste, time and cost) for all users of the same exercise

This lets you compare trainees to each other and to the REFERENCE” results. You can thus see over time if the trainee’s results (and the group in aggregate – shown as “AVERAGE”) are getting closer to the recommended solution path. Remember that you can assign ANY trace file to be the reference, the instructor’s or that of the “best” printer in the plant, etc.

You can directly run the ASA module from this application to check detail of any user. (just double click on the appropriate line)

Session	Exercise	User name	Date	Global time	Global waste	Global cost
Demo	Exercice n°1 _ref	th.STD				
Demo	SHOTS Demo	AVERAGE		00:01	1220	777
Demo	SHOTS Demo	REFERENCE	mercredi 30 septembre 2009	00:01	1261	803
Demo	SHOTS Demo	Mike.STD	mercredi 14 octobre 2009	00:02	1308	832
Demo	SHOTS Demo	Tatiana.STD	mercredi 14 octobre 2009	00:01	1193	762
Demo	SHOTS Demo	thierry.STD	mercredi 14 octobre 2009	00:01	1160	738

Two new print jobs available



Two new print jobs, variants of the famous GATF test form, have been added.



Of course, you can create your own print jobs with the print job editor.

This is a 5-color job created for the WorldSkills contestants (in one of the problems, they had an incorrect PMS ink)

New information in trace report

“Seeing” the trainee’s print copies

- Each copy pulled has its sequential number in the stack (for example you see that the copy was checked on the 59th impression, so you can link the trace file information about the trainee actions information with the copy viewer to “see what they were seeing”

Tracking the ink profile changes

- The densities for each ink screw (for all colors) are automatically included in the trace report. It's thus easier to determine inking evolution. (see example below)

Color control and production information

- Information of production counter has been added to the trace file.
- Information about spectrophotometer or scanning densitometer activity has been added

Example: here we see for each color, the density measures for each ink key.

COPYDESK : copy from top of stack copy from top of stack **34**

Cyan: 1.40/1.40/1.40/1.40/1.40/1.40/1.40/1.40/1.40/1.40/1.40/1.40/1.40/1.40/1.40/1.40/1.40/1.40/1.40/1.40

Magenta: 1.10/1.10/1.10/1.10/1.10/1.10/1.10/1.10/1.10/1.10/1.10/1.10/1.10/1.10/1.10/1.10/1.10/1.10/1.10/1.10

Yellow: 1.22/1.22/1.22/1.22/1.22/1.22/1.22/1.22/1.22/1.22/1.22/1.22/1.22/1.22/1.22/1.22/1.22/1.22/1.22/1.22

Black: 1.00/1.00/1.00/1.00/1.00/1.00/1.00/1.00/1.00/1.00/1.00/1.00/1.00/1.00/1.00/1.00/1.00/1.00/1.00/1.00

Specific Color 1: 1.00/1.00/1.00/1.00/1.00/1.00/1.00/1.00/1.00/1.00/1.00/1.00/1.00/1.00/1.00/1.00/1.00/1.00/1.00/1.00

Specific Color 2: 1.00/1.00/1.00/1.00/1.00/1.00/1.00/1.00/1.00/1.00/1.00/1.00/1.00/1.00/1.00/1.00/1.00/1.00/1.00/1.00

Some anomalies resolved in version 4.7

- Virtual time in pressroom is now limited to 24 hours
- Photoshop script for 2 colors job is now correct
- Plate packing : it's now possible to fix the problem
- Ink profile is now the same in the trainer application and in the simulator
- Printing speed can no longer be inferior to 3000 c/h.