

World's Largest Sinapse SHOTS Sheetfed Press Simulator Installation in Beijing

October 20th, 2008 - The Beijing College of Printing, a division of Beijing Industry and Trade Technicians College, has just installed 22 more Sinapse SHOTS sheetfed offset press training simulators following their initial purchase of two systems. This makes Beijing College the world's largest installation with 24 licenses from Sinapse Print Simulators.

Sinapse Print Simulators (www.sinapseprint.com) makes a wide range of press process training simulator systems for sheetfed and web based production – offset, flexo and gravure – they lead the world market in such high technology press simulator training systems with over 1,500 installations to date.

Mr ZhanLian Cheng, master of Beijing Industry and Trade Technicians College: “I heard about the simulators several years ago, and purchased two SHOTS sheetfed simulators to evaluate their possibilities. I found them to be very realistic with regard to printing. In addition, they are easy and interesting for students to use; teachers can easily design new courses; and they are open to the integration of other material including multimedia.

“Of course, simulation is also much less expensive than purchasing real presses — particularly when it comes to teaching 600 students about the offset process, press operation and quality control.”

SHOTS Certified Trainers

Several of the College's instructors qualified as SHOTS Certified Trainers after a week-long Sinapse training session, allowing the college to become an accredited SHOTS Training Center.

Mr Cheng adds that: “Being the world's largest SHOTS installation is good, but what is really important are the benefits that Sinapse technology gives our students:

- * a way to accelerate student learning,
- * an objective means of evaluating their performance, and
- * an enjoyable and stimulating learning method.

“It prepares them for an exciting future and helps to provide the Chinese print and packaging industry with the skilled personnel necessary for continued growth in volume and quality.”

SINAPSE Print Simulators

Sinapse

Print Simulators

Mr Frank Mo, CEO of Shanghai Ziyang, one of the Sinapse distributors in China, explains the importance of print simulators in relation to their other activities: “Ziyang is the largest distributor of SHOTS in China – and finds that they fit very well with our distribution of color control and proofing equipment, and with our partner training company Bestprint. The simulator shows trainees how and why to use the color control tools (to minimize costs and ensure high quality) and is part of a structured and measurable training program.”

Mr Peter Herman, CEO of Sinapse Print Simulators, comments: “Beijing College of Printing is one of the most important educational institutions in China for printer training. Therefore they have a high priority to use modern training technology. Their reputation for excellence makes sure that they will be a source of new innovations in the simulator and will create a virtuous circle of continuing improvement.”

A ceremonial plaque at the College’s SHOTS Training Center recognizes this new partnership and was dedicated by the three organizations.

SHOTS and other Sinapse press simulators will be shown at the AIP exhibition in Shanghai in November — check the www.sinapseprint.com site for the exact booth numbers and dates.

For more information, contact diane.delorme@sinapseprint.com

Publication images like these are available from Sinapse:



Sinapse SHOTS press simulator celebration at the Beijing College of Printing

The Beijing College of Printing has just installed 22 more Sinapse SHOTS sheetfed offset press training simulators following their initial purchase of two systems. This makes Beijing College the world’s largest installation with 24 licenses from Sinapse Print Simulators.

Source : Sinapse Print Simulators

Pictured left to right are:
Mr Frank Mo, Shanghai Ziyang (Sinapse distributor),
Mr ZhanLian Cheng, master of Beijing Industry and Trade Technicians College and Mr Peter Herman, CEO of Sinapse Print Simulators

SINAPSE Print Simulators

Bâtiment Epicure – Les Algorithmes - 91194 SAINT AUBIN CEDEX – France
Tél. : +33 (0)1.69.35 54 00 - Fax : +33 (0)1.69 35 07 15 – e-mail : info@sinapseprint.com
S.A.S. au capital de 419 400 Euros - RCS. EVERY B 432 377 604 - TVA Intra. FR 33 432 377 604 - NAF : 5829C

Sinapse

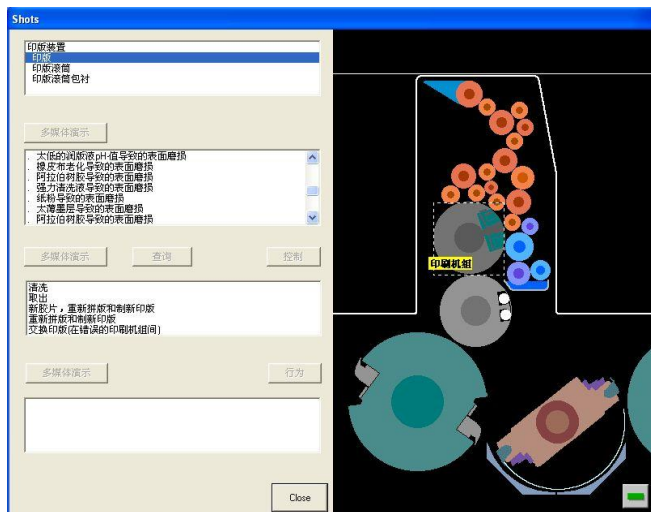
Print Simulators



Sinapse Print Simulators SHOTS sheetfed press simulator screen image.

This image shows the simulator on-screen appearance of a press with dampening station parameters.

Source : Sinapse Print Simulators



Sinapse Print Simulators SHOTS sheetfed print unit simulator screen image.

This image shows the simulator on-screen appearance of a print unit with blanket parameters.

Source : Sinapse Print Simulators



The new logo for Sinapse Print Simulators (formerly known as Sinapse Graphic International).

Note : higher resolution logo files are available for publication

SINAPSE Print Simulators

Bâtiment Epicure – Les Algorithmes - 91194 SAINT AUBIN CEDEX – France

Tél. : +33 (0)1.69.35 54 00 - Fax : +33 (0)1.69 35 07 15 – e-mail : info@sinapseprint.com

S.A.S. au capital de 419 400 Euros - RCS. EVERY B 432 377 604 - TVA Intra. FR 33 432 377 604 - NAF : 5829C